

Urological symptoms in the older adult

Claire Yang, MD
Professor of Urology
Harborview Medical Center
VA Puget Sound Health Care System



Outline

- Introduction
- Anatomy and function of **lower urinary tract**
- Common symptoms related to urination in the older adult

What is urology?

- Disorders/diseases of the genitourinary/urogenital tract
 - Urinary tract function (NOT kidney function)
 - Bladder and prostate = storage and evacuation of urine
 - Kidney stones
 - Genital/sexual function (primarily male)
 - Erectile dysfunction – surgical management
 - Male infertility
 - GU infections – surgical management
 - GU malignancies – surgical management
- male and female, pediatrics and adult

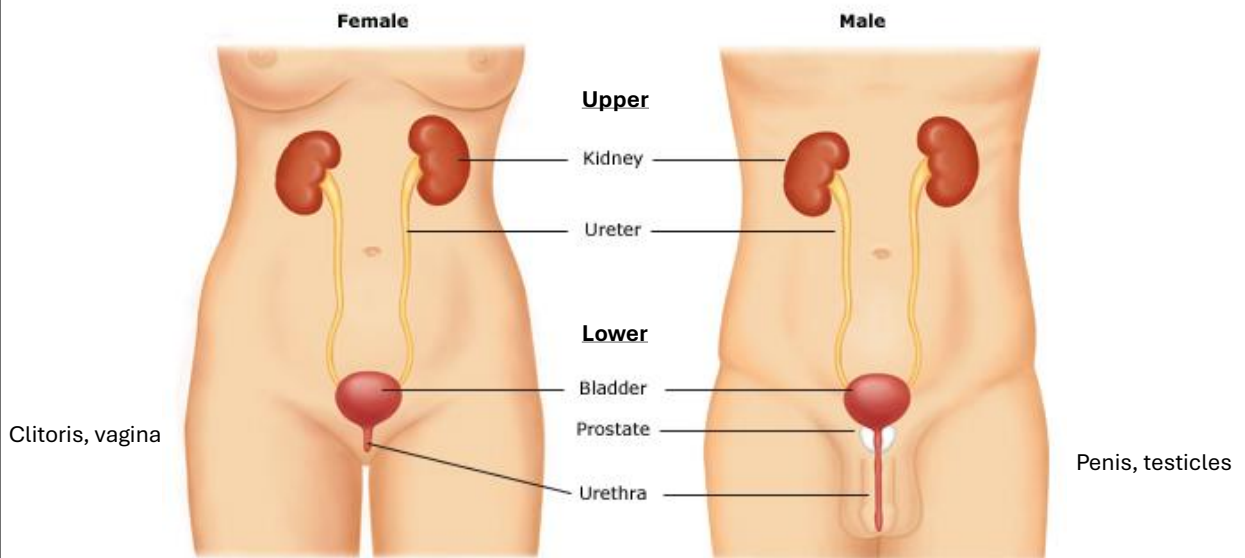
Lower urinary tract (LUT) symptoms and conditions affecting the older adult

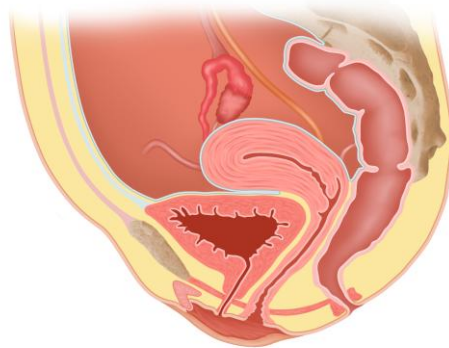
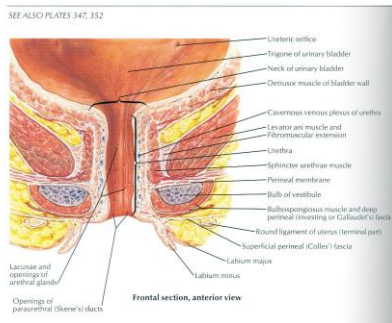
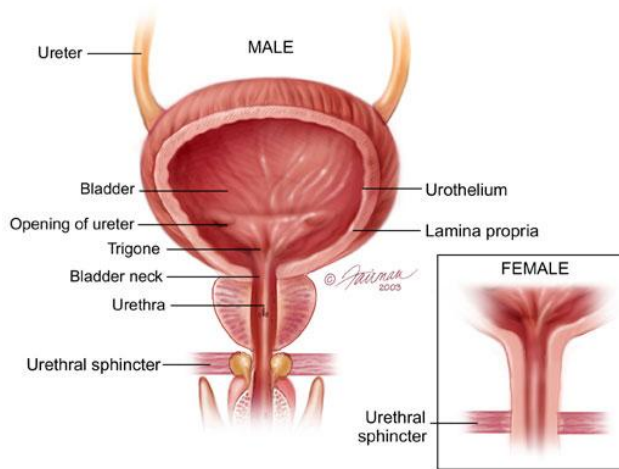
- Nocturia
- Daytime frequency
- Incontinence

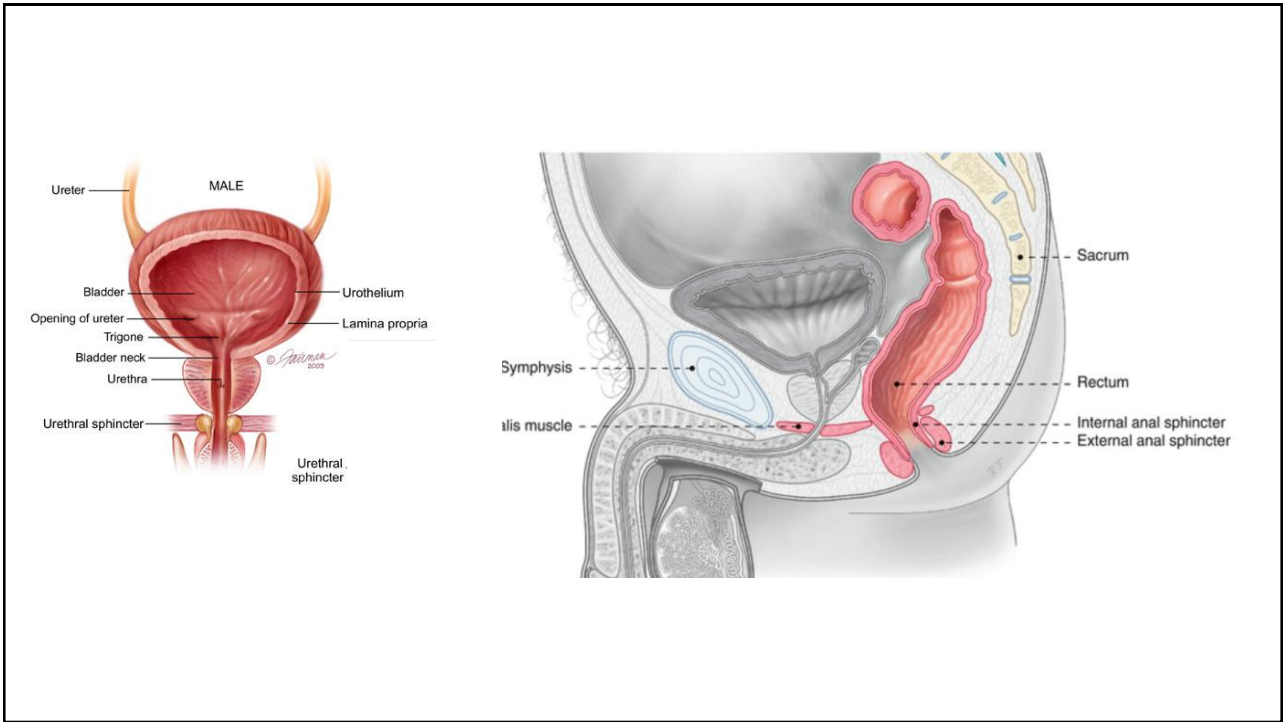
- Urinary tract infections (UTI)
- “BPH”: straining, hesitancy, slow stream
- Genitourinary syndrome of menopause “GSM”: dryness/irritation, UTIs

Lower urinary tract anatomy and function

The urogenital tract



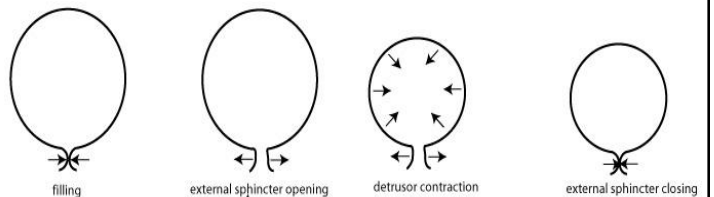




Function of the LUT, mechanics

- Store urine until socially appropriate
 - reservoir, filling, 'diastole'
 - store urine at low pressures = compliance
- Evacuate urine efficiently
 - emptying, 'systole'
 - low pressure contraction for evacuation

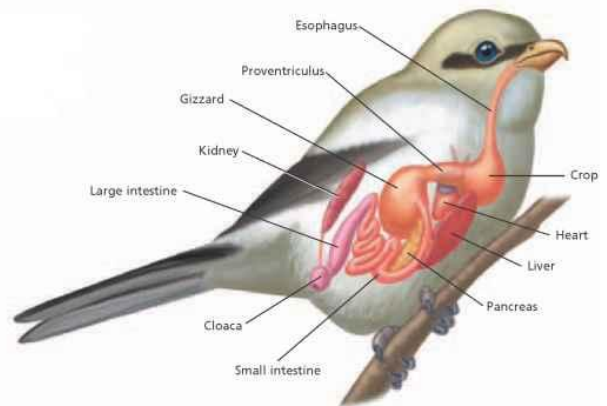
Normal Voiding



Micturition / urinary cycle physiology: store and evacuate

- Storage phase
 - Urinary sphincters closed
 - Bladder muscle is relaxed, “stretchy”
 - Nerve signals from bladder sent to spine and brain that filling is occurring
 - Brain sends signals to bladder to NOT squeeze
- Voiding phase
 - When bladder is full/sensation to void is strong, brain sends signals to sphincters to open
 - When sphincters are relaxed and open, bladder squeezes urine out

No micturition cycle (... and probably no urinary symptoms)



Evaluating the older adult with lower urinary tract symptoms

Lower urinary tract symptoms

- Increasing incidence of dysfunction and symptoms with advancing age
 - Organ/tissue changes are irreversible, symptoms can be manageable
 - Urinary changes with aging are not preventable
 - Preservation of urinary function related to overall health
- LUT symptoms are not pathognomonic of a particular condition
 - Many conditions share similar symptoms
- Not all dysfunction or symptoms are bothersome or need treatment/management

Factors affecting LUT function in older adult

- General health
- Neurologic health
- Mobility
- Medications – most medications with impact on the urinary function will act to make urinary function worse
 - nervous system
 - polypharmacy
 - drug metabolism
- Benign, non-infectious conditions and symptoms are often not cured, just managed

Initial approach to the patient with urinary complaints in primary care

- History
- Physical examination – do not skip this!
- Ancillary evaluation
 - Urinalysis/urine culture
 - considerations in the older adult to getting 'good' specimen

Urinary Symptoms

- Urge
- Urgency
- Pain/discomfort
- Hesitancy
- Loss of sensation of urination
- Frequency
- Sensations on body with need to urinate
- Pushing/straining to urinate
- Relaxing to urinate
- Spraying stream
- Weak stream
- Post void dribbling
- Intermittency
- Incomplete emptying
- Incontinence
- Nocturia

Urinary Symptoms

- Urge
- Urgency
- Pain/discomfort
- Hesitancy
- Loss of sensation of urination
- **Frequency**
- Sensations on body with need to urinate
- Pushing/straining to urinate
- Relaxing to urinate
- Spraying stream
- Weak stream
- Post void dribbling
- Intermittency
- Incomplete emptying
- **Incontinence**
- **Nocturia**

→ COMMON TO MEN AND WOMEN

What is Nocturia?

- > **Waking during the night at least once**
 - Clinically significant if ≥ 2
- > **Most common reason for interrupted sleep in adult population**



Impact of Nocturia

- > **Excessive daytime sleepiness**
- > **Cognitive dysfunction**
- > **Diminished quality of life**
- > **Increased mortality risk with nocturia**
 - Falls



Nocturia Prevalence

- > **Majority of older patients up at least once to void**
 - 50-60 yrs ~50% \geq 1 void/night
 - By early 60's ~25% \geq 2 void/night

SOME causes of Nocturnal Polyuria

- > Caffeine and alcohol before sleep
- > Excessive fluid intake prior to/during sleep time
- > Loss of circadian rhythm of ADH secretion
- > OSA \rightarrow hypoxia \rightarrow ANP secretion
- > Edema mobilization



Other causes of nocturia

- > **Changes in sleep cycles, resulting in awakening**
- > **OSA**

Nocturia

Source of morbidity and mortality in older adult

Not all nocturia is due to “BPH” or “OAB”

Rx with behavioral modifications first

Diagnostic tool: voiding diary

Daytime urinary frequency

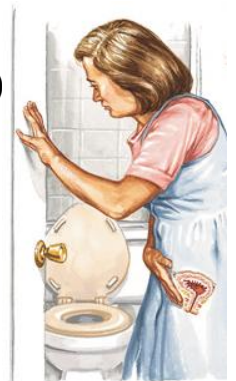
- Voiding more frequently than perceived to be normal
- What is normal? What is healthy?
 - The sensation to void is healthy, act of voiding is healthy
 - But sensation to void is a noxious sensation
 - “Frequency” is an irritation and inconvenience
 - Can be associated with unhealthy conditions: cystitis/UTI, neurological impairment
 - Or can be due to benign causes, including unknown

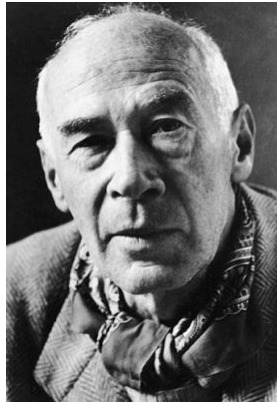
Causes of daytime urinary frequency

- Very long list! Frequency is associated with many conditions
- Threshold for feeling need to void is at lower volume (neuropathy/neurologic disease, loss of detrusor compliance)
- Impact of bladder irritants is greater
- Emotional: fear of leaking, being away from toilet
- Enlarged prostate sequel in men

Impact of frequency

- Limiting activity
- If mobility is limited, increased risk of incontinence, more care burden





“To relieve
a full bladder
is one of the
great human
joys.”

-Henry Miller

Initial approach in primary care

- Align definitions for “frequency”
 - Typical range voids per waking hours = 3-8
- Assess volume and type of fluid intake
- Query other accompanying symptoms
 - Rule out infectious causes

Incontinence

- Involuntary loss of urine
 - Spectrum of severity
- Urinary continence is deeply seated, emotionally charged
 - Distress not related to volume lost
- Associated with aging: neurologic disease, surgery, sequel of pregnancy
- Huge burden: financial, caregiving, emotional and QOL

Incontinence: myths

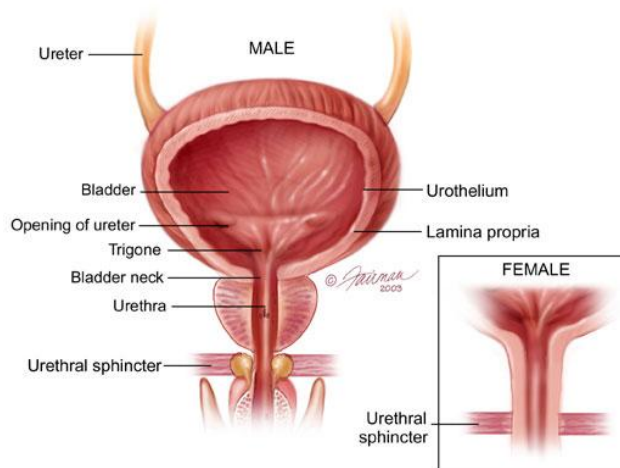
- increases UTI risk
- is inherently unhealthy

Types of incontinence

- **Stress:** loss of urine due to increases in intra-abdominal pressure
 - Low outlet resistance, loss of internal sphincter integrity/function
- **Urgency:** loss of urine due to sudden onset of sensation to void, with inability to stop urination
 - Low outlet resistance, loss of inhibition of reflex
- **Mixed:** stress and urgency incontinence occurring together
- **Overflow:** intravesical pressure overcoming outlet resistance
- **Nocturnal enuresis:** incontinence while sleeping
 - In adults otherwise continent, occurs with sedatives, alcohol

Types of incontinence

- **Stress:** loss of urine due to increases in intra-abdominal pressure
 - Low outlet resistance, loss of internal sphincter integrity/function
- **Urgency:** loss of urine due to sudden onset of sensation to void, with inability to stop urination
 - Low outlet resistance, loss of inhibition of reflex
- **Mixed:** stress and urgency incontinence occurring together
- **Overflow:** intravesical pressure overcoming outlet resistance
- **Nocturnal enuresis:** incontinence while sleeping
 - In adults otherwise continent, occurs with sedatives, alcohol



Types of incontinence

- **Stress:** loss of urine due to increases in intra-abdominal pressure
 - Low outlet resistance, loss of internal sphincter integrity/function
- **Urgency:** loss of urine due to sudden onset of sensation to void, with inability to stop urination
 - Low outlet resistance, loss of inhibition of reflex
- **Mixed:** stress and urgency incontinence occurring together
- **Overflow:** intravesical pressure overcoming outlet resistance
- **Post void dribbling**
- **Nocturnal enuresis:** incontinence while sleeping
 - In adults otherwise continent, occurs with sedatives, alcohol

Types of incontinence

- Stress: loss of urine due to increases in intra-abdominal pressure
 - Low outlet resistance, loss of internal sphincter integrity/function
- Urgency: loss of urine due to sudden onset of sensation to void, with inability to stop urination
 - Low outlet resistance, loss of inhibition of reflex
- **Mixed: stress and urgency incontinence occurring together**
- Overflow: intravesical pressure overcoming outlet resistance
- Nocturnal enuresis: incontinence while sleeping
 - In adults otherwise continent, occurs with sedatives, alcohol

Types of incontinence

- Stress: loss of urine due to increases in intra-abdominal pressure
 - Low outlet resistance, loss of internal sphincter integrity/function
- Urgency: loss of urine due to sudden onset of sensation to void, with inability to stop urination
 - Low outlet resistance, loss of inhibition of reflex
- Mixed: stress and urgency incontinence occurring together
- **Overflow: intravesical pressure overcoming outlet resistance**
- Nocturnal enuresis: incontinence while sleeping
 - In adults otherwise continent, occurs with sedatives, alcohol

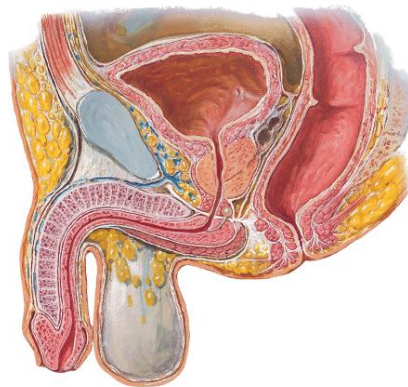
Types of incontinence

- Stress: loss of urine due to increases in intra-abdominal pressure
 - Low outlet resistance, loss of internal sphincter integrity/function
- Urgency: loss of urine due to sudden onset of sensation to void, with inability to stop urination
 - Low outlet resistance, loss of inhibition of reflex
- Mixed: stress and urgency incontinence occurring together
- Overflow: intravesical pressure overcoming outlet resistance
- Nocturnal enuresis: incontinence while sleeping
 - In adults otherwise continent, occurs with sedatives, alcohol

Types of incontinence

- Post void dribbling

Median (Sagittal) Section



Urological symptoms in the older adult

- Common in primary care practice
- More common with advancing age
- Symptoms are not pathognomonic of disease/condition
- Many can be managed with behavioral modifications

